

Small Scale Bean Harvesting

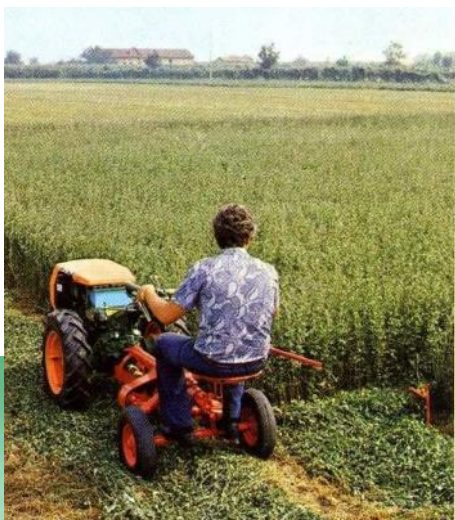


When beans are mature plants they are cut off at ground level and left in a windrow to allow vegetation to dry. In large scale operations special front mount sickle bars cut and windrow several rows at a time.



When bean vegetation is sufficiently dry the large scale grower would use a special pull type combine to pick up windrowed plants and thresh out beans as it travels along windrow. There is no economically viable small version of this machine.

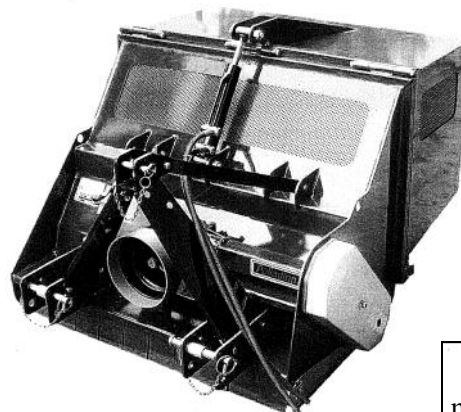
For the smallest scale grower a walking tractor with sicklebar mower can do the job. Note there are dedicated motor mowers and sicklebar mower attachments for walking tractors.



The smaller scale producer can instead use a small round baler with a net wrap option to pick bean material from windrow to form small round bales that are easy to handle and store. The net wrap helps to retain beans until you have time to put them through a stationary thresher. These balers come in sizes powered by 15 plus HP tractors.



Those working on a little larger scale could use a bidirectional tractor with front sicklebar mower or drum mower that cuts and windrows all at once. Pictures show mowers cutting grain and hay but can do many other crops that need to be cut before they are completely dry or ripe.



Still another labor saving method of harvesting is to use a mower/collector to pick up windrowed crop. Some bean breakage will result from high speed and aggressiveness of flail blades, but broken beans can be used at home and/or as protein supplement for livestock. The mower/collectors come in many sizes and can cost less than balers.



For conventional tractors rear mounted drum mower or double acting sicklebar mower will do